

SHROPSHIRE HILLS ART WEEK

3 to 11 June 2017

11am to 5pm

SHROPSHIRE
HILLS



OPEN STUDIOS

ShropshireHillsArtWeek.co.uk

Shropshire Hills Art Week

3 to 11 June 2017

The Shropshire Hills Art Week is an opportunity for visitors to see and buy art, and to meet artists in their studios and at joint shows in venues throughout the Shropshire Hills. This is our fourth year and we welcome new venues in Broseley, Church Stretton, Bleddfa, Kerry and Knucklas, and a town-wide sculpture trail in Bishop's Castle.

Please spread the word! Tell your friends to pick up brochure and plan your visit

Look out for the logo and follow our orange signs to get to each venue

Accessibility is marked, but if in doubt, please phone the venue direct

Many of our venues offer tea and cakes, and there are pubs and coffee shops in most of the towns and villages

Space in the brochure is limited, and you can find a lot more information on our website, including additional things to do or visit near many of the venues, suggestions for walks, and links to public transport

Each venue is open daily from 11-5 throughout the 9 days of SHAW, unless otherwise stated

If you are making a special visit please phone the venue to check

Please leave your details and comments at each venue so we know what we are doing right and what we can improve for next year

Disabled access is marked, but if in doubt, please phone the venue direct; we are sorry that some venues are not suitable for all visitors

Please consult our website for further information www.ShropshireHillsArtWeek.co.uk

Shrewsbury Open Studios also takes place over the first two weekends in June, for details see

www.shrewsburyopenstudios.co.uk



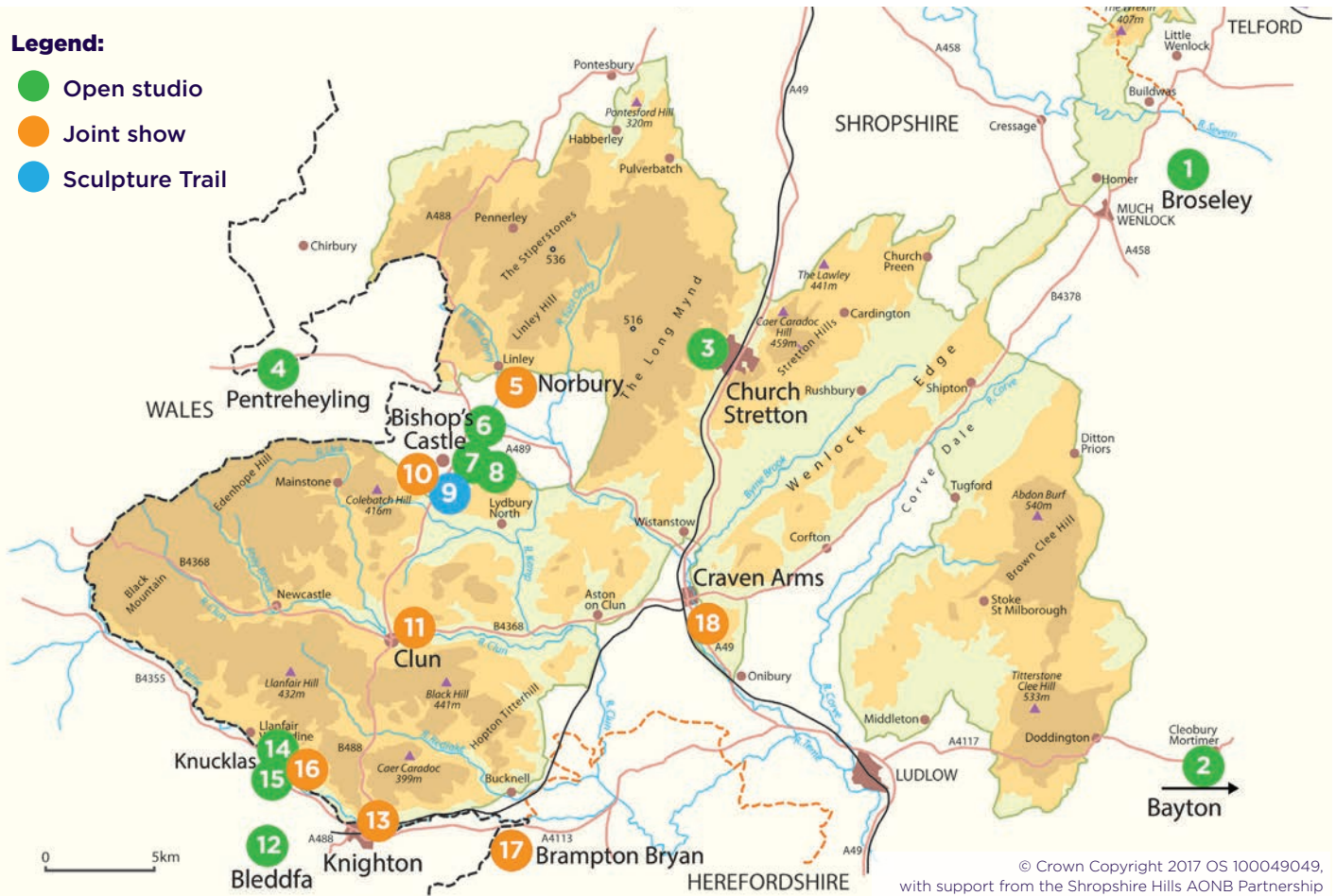
Look out for the logo and follow our funky orange signs to find each venue!



The Shropshire Hills are designated as an Area of Outstanding Natural Beauty (AONB), recognising the national importance of the landscape which has long been an inspiration to artists, craftsmen and writers.

Legend:

- Open studio
- Joint show
- Sculpture Trail



© Crown Copyright 2017 OS 100049049, with support from the Shropshire Hills AONB Partnership

WWW.SHROPSHIREHILLSARTWEEK.CO.UK

1 ROD WILLIS

OPEN STUDIO: ROSE COTTAGE, 25 COB WELL ROAD, BROSELEY WOOD, SHROPSHIRE TF12 5QN

Entrance is located on Sycamore Road, second cottage on the right. Parking is available at Broseley Cricket Club

Broseley is in the heart of the origins of the industrial revolution, and there are many nearby attractions related to this:

The World Heritage site of Ironbridge 0.5 miles

Benthall Edge woodland walks 0.3 miles

Ron's cottage is located within the vicinity of **The Broseley Jitty Trail** - a maze of narrow lanes and passageways that link together a higgledy-piggledy jumble of old squatter cottages. Each jitty has a distinctive name reflecting its history and folklore and the people who once lived and made their lives there

Tea and Coffee will be available.

No disabled access 07909913247 OR 01952 882550



ROD WILLIS - Painter

2 PAULINE & ROGER BRADLEY

OPEN STUDIO: GARDEN COTTAGE, BAYTON, WORCESTERSHIRE DY14 9LY

Taking the Clows Top road from the centre of Bayton village, the entrance to the studio is the second drive on the right; coming from Clows To, it is on the left just before Bayton

Full disabled access to the display studio



PAULINE BRADLEY - Printmaker



ROGER BRADLEY - Painter

3 PAUL BAINES

OPEN STUDIO: 40 WATLING STREET SOUTH, CHURCH STRETTON, SHROPSHIRE SY6 6BQ

Tea and coffee available

Partial disabled access; phone 01694 720366 for more information



PAUL BAINES - Mixed media artist

4 KERRY VALE VINEYARD

PENTREHEYLING, POWYS, SY15 6HU

1.5 miles out of Churchstoke on the A489 towards Newtown
Vineyard tours, shop and a wine café
Open daily 10am-4pm

Art gallery is upstairs. Phone for information about disabled access 01588 620627



LYNN EVANS - Torn paper collages

If you are coming from Wales, the first venues you will reach are Bleddfa, Knucklas and Knighton; if from the south, your first venue is the Art Café at Craven Arms



The Barn
at Lees Farm

The Yurt & The Annex are nestled in the heart of the Ironbridge Gorge a UNESCO World Heritage Site

www.thebarnatleesfarm.com
07814 100330

Enjoy Moments and Make Memories



5 THE COACH HOUSE

NORBURY, BISHOPS CASTLE, SY9 5DX, 01588 650846

Formerly the Sun Inn, this ancient building has been providing travellers with hospitality, warmth and comfort since the early 1700s. Come and see the range of artworks on show, and perhaps make a weekend or short break at this unique bed and breakfast

Partial disabled access. Please phone 01588 650846 for further details



CLAUDIA PETLEY - Metalsmith



KATE CHITHAM - Painter



EMILY WILKINSON - Mixed media artist



TRICIA MITCHELL - Painter

6 TIM PHILLIPS

ST CLEOPAS, CABIN, BISHOP'S CASTLE, SY9 5JG

St. Cleopas is half a mile up the hill from Welsh Street, Bishops Castle, park by the garage doors set into the bank on the right. The house sits on a bank, so access is up a long ramp (or steps).

Limited disabled access. Phone 01588 638762 for more details



TIM PHILLIPS - Painter and Box maker

7 MARION WATSON

CHAPEL VIEW, STATION STREET, BISHOPS CASTLE SY9 5AQ

Next door to the Methodist Chapel

No disabled access. Phone 0777 4035710 for more details



MARION WATSON - Jeweller

8 JOCK WRIGHT

YARBOROUGH HOUSE MARKET SQUARE, BISHOPS CASTLE SY9 5BN

Bookshop and café



JOCK WRIGHT - Painter

9 THE BISHOPS CASTLE SCULPTURE TRAIL

THE BISHOPS CASTLE SCULPTURE TRAIL can be started at any time during the week, and showcases public and private sculptures around the town. Pick up a flyer at Bank House and other SHAW venues in Bishops Castle. Do have a look and let us know what you think of this new part of Art Week

Advance warning for the Bishops Castle Michaelmas Fair: Amy Sterly will be doing GIANT ROLLER PRINTING outdoors on 23 September 2017 from 2-5 pm. Fun for everyone!

10 BANK HOUSE

HIGH STREET, BISHOP'S CASTLE, SY9 5BQ
01588 630026 OR 07712 010525

A great exhibition space and a lovely venue for groups to stay in Bishop's Castle for walking, cycling, yoga, art. Bank House showcases a number of local and regional artists, and is also the start of the Bishops Castle Sculpture Trail, which is new for Art Week this year; why not pick up a trail map? Tea and cake are available

There are steps at the entrances, so please call for information or assistance: 01588 630026 or 07712 010525



ANGELA MINKIN - Printmaker



JOHN BROOKES - Painter



TERRY BROWNE - Chair and Box maker



CHRIS WILLIAMS - Painter



DRUSILLA COLE - Printmaker



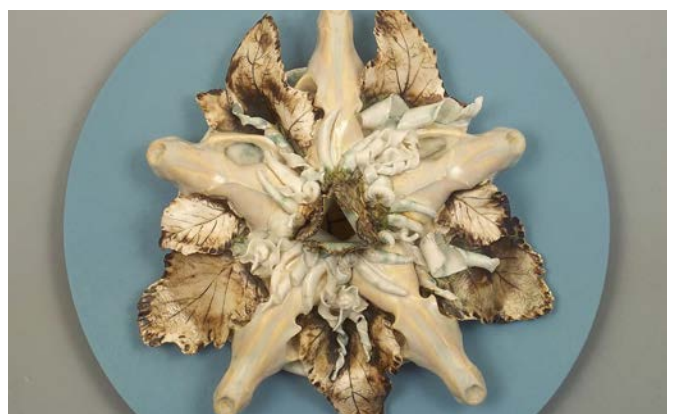
JO HALDEN - Painter



JONATHAN MIDDLEMISS - Painter



GORDON YAPP - Printmaker



SHANNON DONOVAN - Ceramicist



ANNE STEPHENS - Jeweller



JAMES HALL - Photographer



ROJ WILLIAMS - Sculptor



BRONTE WOODRUFF - Painter



ANDREW FUSEK PETERS - Photographer



Welcome to Bank House

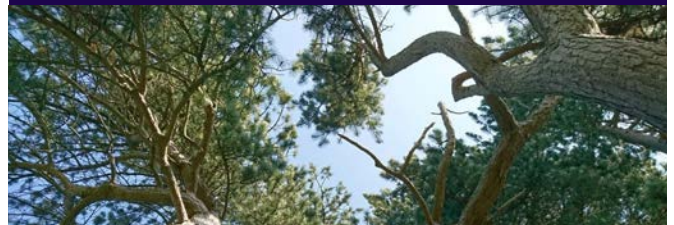
Book your escape to our luxury B&B. The perfect choice for lazy or active weekends in the glorious Shropshire Hills. Or book the whole house for your special celebration

Call Gerry on 07712 010525



EMILY HARDMAN - Artist

Kirsten E. Hubmann
HOLISTIC MASSAGE THERAPIST (MTI)



Appointments available at
The Retreat at The Workhouse
Presteigne Industrial Estate, LD8 2UF
T: 07860 156615
E: kirstenelizabethhubmann@gmail.com



JULES MCROBBIE - Painter

Borderland Visual Arts Open Studios
In and around Oswestry
10/11 and 17/18 June; 10am to 5pm
www.BorderlandVisualArts.com

11 CLUN: NOTE THIS EXHIBITION MOVES ABOUT DURING SHAW!

Weekend Pop-Up Exhibition -
THE SUN INN, 10 HIGH STREET, CLUN, CRAVEN ARMS, SY7 8JB
Saturday 3 June to Sunday 4 June 2017 - 11am to 5pm

Main Exhibition -
CLUN BARN, 9 CHURCH STREET, CLUN, CRAVEN ARMS, SY7 8JW
Monday 5 June to Sunday 11 June 2017 - 11am to 5pm



BRONWYN THOMAS - Sculptor



JOSIE CROMPTON - Painter



JANET MANIFOLD - Sculptor

12 BLEDDFA

OLD SCHOOL HOUSE GALLERY, BLEDDFA CENTRE,
BLEDDFA, KNIGHTON, POWYS LD7 1TB

An excellent gallery, shop and tea rooms, plentiful parking, pub next door, attractive church of St Mary Magdalene open to visitors, beautiful location - Phone 01547 550377



RUSSELL MORRIS - Illustrator

13 THOMAS CLOUGH UPHOLSTERY WORKSHOP

THE OLD MALT STORE, 4A CHURCH STREET,
KNIGHTON, POWYS LD7 1AG
01547 529705 OR 07964 023841; OPEN FROM 9.30AM

Thomas Clough will have his upholstery workshop open for the duration of SHAW and is happy to welcome visitors. There are 5 days of special interest when Thomas will be teaching his upholstery courses, including a monthly taster session for people who are interested in trying out some work before committing to a longer course; his regular bunch of keen upholsterers working on a wide range of projects from sofas, chairs, headboards etc; and a weekend course.

As well as the classes, Tom will be working on clients furniture and is happy to advise on suitable fabrics from his large range of Linwood and Warwick fabric swatches.

There is good disabled access to the workshop, but this is a working environment with ongoing courses, and is not suitable for children



TOM CLOUGH - Upholsterer

Many of our artists have a social media presence. If you want to see more of their work, why not look them up on Facebook or follow them on Twitter or Instagram. Look for details on the **SHAW** website (www.shropshirehillsartweek.co.uk) or just Google them!



Knucklas17
a modern meeting with the past

a family-friendly arts-based event in the Teme Valley near Knighton, with a unique Iron Age theme on the dramatic site of the Knucklas Castle Land Project & the Carnyx is coming !

Saturday 19 August
Oiddas to Oidnight

www.knucklas17.org

14 MAGGIE JONES & ROBERT M WOOD

CASTLE GARDENS, KNUCKLAS, KNIGHTON, POWYS LD7 1PS

To reach Castle Gardens you need cross the Heart of Wales railway line. Please park in the layby, and walk back to the crossing gate. Train times will be on the gate - [No disabled access](#)



MAGGIE JONES - Painter



ROBERT M WOOD - Glass artist

15 CASTLE HILL ARTS

CASTLE HILL FARM, KNUCKLAS, POWYS LD7 1PS

Use LD7 1PS on your Sat Nav, but keep following the 'Pottery' signs up the hill to the end of the road

[Complete disabled access, but not disabled access loo.](#)
Phone 01547 529670 or 07813 323587 for details



TONY HALL - Potter

16 UPPER HOUSE

KNUCKLAS, KNIGHTON, LD7 1PN | 01547 528792

Compare and contrast sculpture in wood and stone, and join with a group of art students as they create a new work.

This is a working studio and exhibition space in a beautiful village. In addition to sculpture in the garden and art inside, there is also a pub, a castle and a community woodland to explore



LOTTIE O'LEARY - Stone carver



THE CAMBERWELL KIDS - Visual artists



ANDREW PEARSON - Wood carver

Please don't forget to sign the artists' visitor books and leave your contact details and any comments

We hope you have enjoyed visiting artists in their studios. If you have not already given feedback & want to please feel free to drop us a line via

info@ShropshireHillsArtWeek.co.uk

17 AARDVARK

**THE BOOKERY, MANOR FARM, BRAMPTON BRYAN,
BUCKNELL SY7 0DH, 01547 530744**

Aardvark has a large exhibition space, thousands of books, and a very good tearoom! It is in a charming nineteenth century barn, surrounded by beautiful countryside. Come and browse, visit **'Worlds and Otherworlds'**, and while away a happy hour with people who know and love books

Aardvark Books is just off the A4113 Brampton Bryan, midway between Ludlow and Knighton. It is on the edge of the Shropshire Hills in Herefordshire, very near the Shropshire and Powys borders. Less than 2 miles from Bucknell train station and on the Ludlow-Knighton bus routes 738, 740, 783

Full disabled access



BOB CUNNING - Painter



BRONTE WOODRUFF - Painter



SARAH JAMESON - Photography, drawing, monoprint



PEARL TAYLOR - Feltmaker



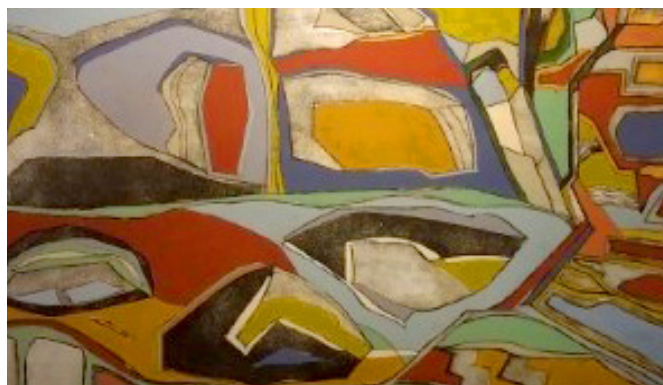
MICHAEL HANCOCK - Printmaker



ISOBEL HUTTON - Painter



TIM HARRAL - Sculptor



HELENA ORŁOWSKI - Painter



JANE KEAY - Painter

17 AARDVARK



PAUL CATON - Wood carver



SUSIE CAWLEY - Painter



NANCY FROST - Ceramicist



MAGGIE DAVIS - Painter



KIM DAVIS - Wood turner

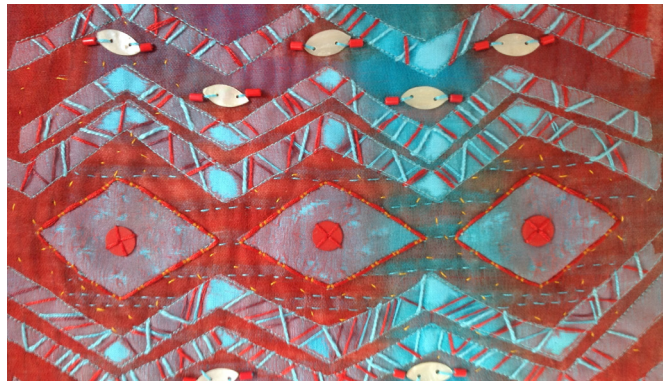
17 AARDVARK



KATHERINE SOUTAR CADDICK - Painter

18 ART CAFÉ

THE SHROPSHIRE HILLS DISCOVERY CENTRE, A49,
CRAVEN ARMS, SY7 9RS | 01588 676060



The Shropshire Hills Art Café Group has met at the Discovery Centre in Craven Arms since 2004

Set in a unique grass-roofed building, the Discovery Centre has a popular café with free WIFI. The 30-acre Onny Meadows site is well signposted for gentle strolls along riverside paths, through wild flowers and woodland. Well behaved dogs are welcome

Ample parking and signed walking trails. Open daily, 10-5.
Full disabled access

KATY ALSTON - Illustrator

STEVE ATTWOOD-WRIGHT - Weaver

THELMA AYRE - Painter

CHRIS BEAN - Painter

SUE CAMPBELL - Sculptor

DRUSILLA COLE - Print maker

RICHARD GOOSEY - Painter

LIZA HARDING - Printmaker

NIGEL KERRY - Artist-painter

LESLEY MCKNIGHT - Painter

PAT SIMON - Textile artist

VICKY VARGAS - Painter

CHRIS WILLIAMS - Painter

ELIZABETH WYNN - Painter

GORDON YAPP - Printmaker



Aardvark Books & Café

We are delighted to support
**Shropshire Hills
Art Week!**

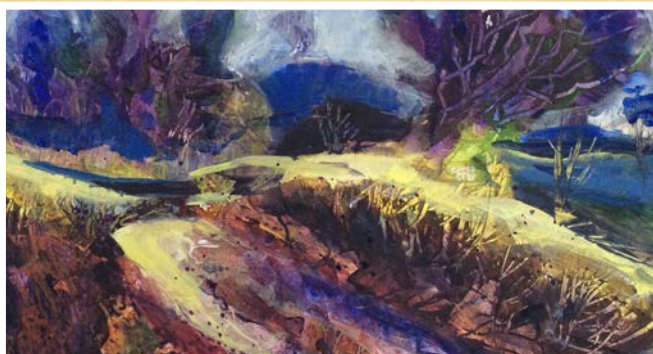
Forthcoming art exhibitions in
our Gallery space:

“The Solstice”

24 June to 2 July 2017

by the Solstice Painters of Montgomery

Jill Bowen-Jones, Bob Charlesworth, Dorothy Charlesworth,
Deirdre Davies, Glenda Davies, Kathy Heinzelmann, Enid
Hill, Hilary Jones, Ian Jones, Sylvia Mills, Valerie Vine.



h.Art: “Weft and Warp”

9 to 24 September 2017

**includes work by Jenni Stuart-Anderson, Lorenzo
Gavarini and Terry Browne, as well as textile
artists and makers.**

Aardvark Books & Café: open every day for books, coffee,
tea and cake, and light lunches. Events include flea markets,
live music and in August 2017, a re-enactment of the Sieges
of Brampton Bryan by the English Civil War Society!

All welcome, free entry and parking.

For more information, check our website: www.aardvark-books.com ; call us 01547 530744 or come and visit!”

Aardvark Books & Café

The Bookery, Manor Farm, Brampton Bryan, Bucknell SY7 0DH
Tel: 01547 530744 - www.aardvark-books.com